



2009 Club Marine Southern 80 Ski Race. February 7th & 8th



Official Competitor Briefing Sheet.

Welcome to the 2009 Club Marine Southern 80 Ski Race.

➤ It is the Responsibility of each Driver and Observer to be familiar with all sections of this sheet.

❖ Penalties/Disqualifications will occur at the Discretion of the Chief Judge if these rules are not adhered to for the duration of the Southern 80 Ski Race.

⊗ Failure to Obey Officials in any area will result in Penalties.

⊗ Abuse of Officials will result in Disqualification. Per SRA Rule:19:1

✦ *The Southern 80 is run under SRA Rules and MWSC Conditions of Entry.*

Please refer to entry form for MWSC Conditions of Entry.

River closures.

Saturday 7th-: From Torrumbarry Weir to Vic Park Boat Ramp. Time 6 am-11am

Goldsbrough Road 4 km downstream of 5 Mile Ramp to Vic Park Boat Ramp.

Time 11 am -7

pm.

Sunday 10th-: From Torrumbarry Weir to Vic Park Boat Ramp. Time 6am-

7pm

Briefings.

Will be Held at MWSC Offices in Annesley St on Friday 6th February 2009.

They will run every 45 min. Starting at 12.00pm. then at 12.45pm, 1.30pm, 2.15pm, 3.00pm, 3.45pm, 4.30pm.

Briefings will run for ½ an hour. You Must Sign out after attending.

⊛ If you are unable to attend on Friday, you must contact MWSC Office on 03 54806754 and organise a time have your briefing on Saturday or Sunday.

● **All Drivers and Observers must attend and sign in for Briefings.**

NO SIGNATURE NO START.

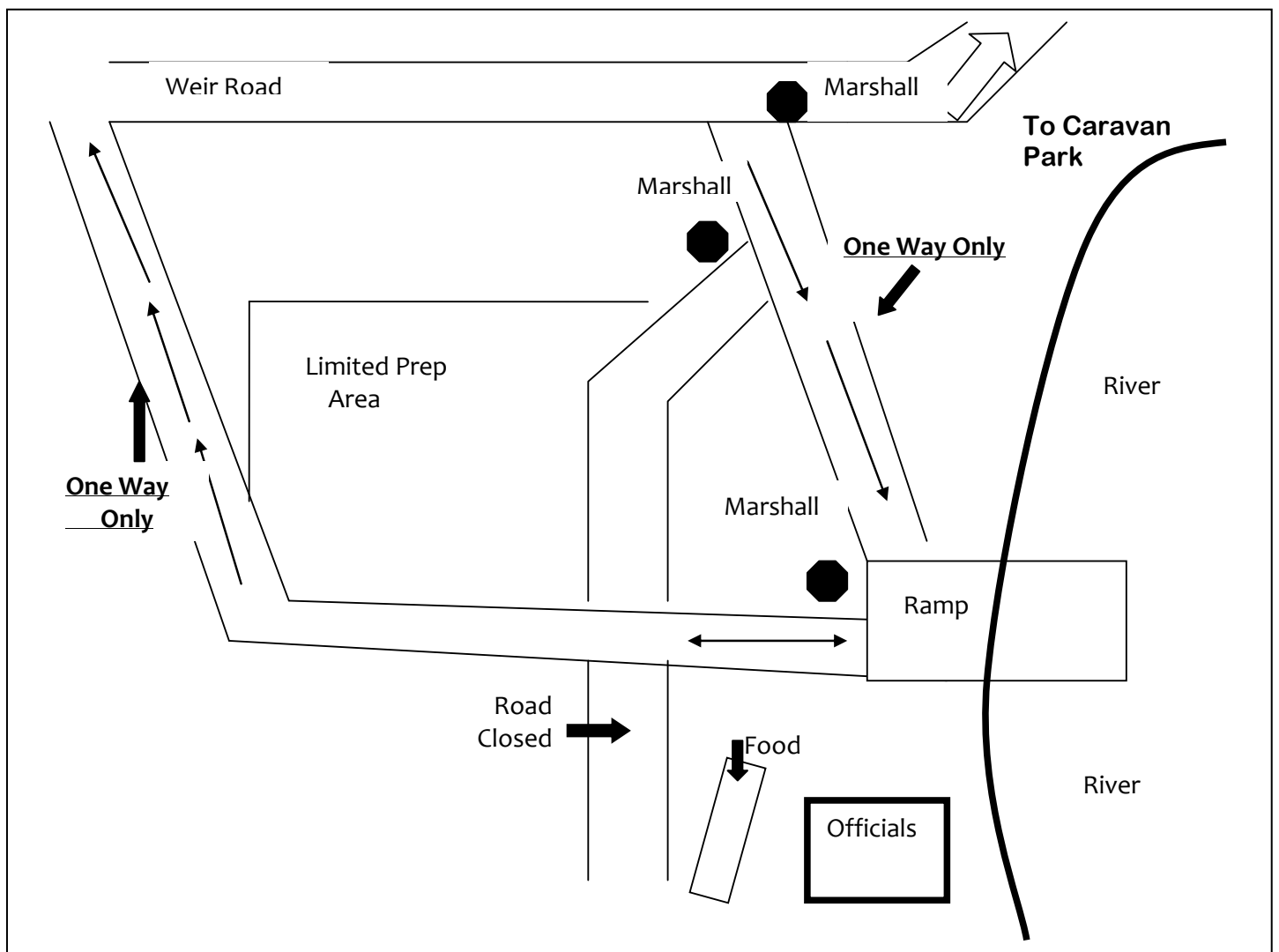
⊙ **Remember your whole team will be Breath Tested Prior to competing in any Race over the whole weekend. You will be tested prior to Every Race.**

Report to officials at start areas to be tested, prior to entering the water.

Saturday Program.

SATURDAY START PROCUDURES.

Torrumbarry Boat Ramp



LAUNCHING PROCEDURE --- TORRUMBARRY BOAT RAMP.

Drive Slowly. There will be Marshals and other Traffic on the road.

1. Co-Operate with Officials.
2. Give-way to boats called forward if requested to do so. Your turn will come.
3. Ropes to be set up in preparation area along the side of the road only.
4. Competitor Stickers must be displayed at all times.
5. Trailer to be moved out of the area immediately the boat is in the water. Have all your gear in the boat. ***Trailer Crews who do not obey directions from Marshals will be deemed as a crew member and that crew will be dealt with at the finish line by the Chief Judge.***
6. Be early. No preference will be given to teams that are late.
7. Competitors will be responsible for hitching and un-hitching trailers to their tow vehicle.
8. **ABUSE OF ANY OFFICIAL BY ANY CREW MEMBER WILL MEAN INSTANT DISQUALIFICATION.**
9. **ABUSE OF ANY OFFICIAL BY A PERSON WHO IS ASSOCIATED WITH ANY RACE TEAM WILL BE DEEMED PART OF THAT BOATS CREW AND SAME PENALTIES WILL APPLY.**
10. Crew members not with boat and in separate cars are not permitted in trailer line and must obey officials and go to general car park, then walk to boat ramp. So have your gear in the boat.
11. Crews can launch their own boats
12. Wrist Bands must be worn by all competitors. * NO BAND NO ENTRY. NO EXCEPTIONS*

Warm Ups.

You may warm up slowly and carefully away from the start area. Competitors who cause problems in this area will be disqualified.

NO ALCOHOL ALLOWED IN BOATS DURING COMPETITION. NO CONSUMPTION OF ALCOHOL IS ALLOWED UNTIL BOAT IS REMOVED FROM THE WATER..

RACE PROCEDURE [pre start]:

Race Start Times for whole weekend are printed in the Official Program.

Hooter will sound at 10 minutes to start.

FLAGS -	GREEN & NATIONAL	- 5 MINUTES TO START
	GREEN DOWN	- 30 SECONDS TO START Skiers in the water
	NATIONAL (AUSTRALIAN)	- START

The first boat away in each session will get the National Flag. All others will get a green flag.

START:

Odd Numbers start on Left side of River. Even numbers start on Right side of River.

The drop of the green flag for the boat prior to you is your ONE MINUTE call. The Green flag will then go up at 30 Seconds, This is your signal to drop your skiers into the water and run out your ropes. Keep engine idling and wait for countdown. DO NOT DROP SKIERS IN UNTILL 30 SEC FLAG.

DO NOT CROSS THE START LINE.
PENALTIES WILL APPLY FOR BREACH OF THIS.

Call will be 15 sec, 10 sec call 5..4..3..2..1..GO !!! **If you drop your skier, odd numbers circle to Left Bank. Even Numbers circle to Right bank. If a successful start is not made following 2 attempts, the competitor must either withdraw or move well away from start area.

SRA Rule No 11.16(c)

RACING:

Throughout the race, skiers are to ski no more than 1 metre outside the wash. Do not proceed along the course unless you have (2) skiers in full race trim. If you are caught by another boat, ***move over to the right*** and let them pass. If you stop for any reason, you must display your orange flag. Breach of the above rules will incur penalties or disqualification; there are marshal boats along the course watching for infringements. **REMEMBER: DRIVE IN THE MIDDLE OF THE RIVER AND TO THE CONDITIONS OF THE DAY TO ENSURE SAFE RACING.**

There are two very tight bends on the course, one on the Saturday course and Two on the Sunday Course. The one for both days is just before Merool Sandbar. The one for Sunday is 2½ to 3km upstream of Thunderbird Boat ramp. (No7) Both of these have a safety boat just before them. These boats will wave yellow flags if necessary as well as have an amber flashing light going if necessary to warn of fallen skiers and stopped boats.

INJURIES:

Wave your Medical Flag to the next boat. If you see a waving Medical Flag, signal to the next Marshal boat and report to the Race Co-Ordinator at the Finish Line. Please observe SRA Rules regarding injured members of your Crew.

IF YOU HAVE A SERIOUS INJURED SKIER, CALL THE EMERGENCY NUMBER ON THE BOAT STICKER (5480 7266)

▶▶ Safety boats are instructed to report incidents, but are to remain on station unless ordered to attend by Race Control

RETIREMENT:

You must move to the nearest bank and **STAY THERE.**

You will be instructed by the sweep boat crew, as to which ramp your boat is to be recovered from at either the end of that event or the end of the day. Your Crew will be called over the P.A at the finish line and *one member only* must report to the Information Centre at the Race Control Office where they will be directed to Boat Recovery. If you recover your boat yourself, you **MUST** call the Boat Recovery Officer on the Recovery/Emergency Number on the Yellow Sticker (5480 7266) Or TXT to 0429408693. Send Boat Name, Number and Class.

⇒⇒ Failure to report to Boat Recovery will mean instant Disqualification for the 2009 Barrie Beehag Ski Race And 2010 Southern 80 Ski Race.

Launching Procedure for 5 Mile Boat Ramp.

▶ Briefing for Blitz & Presidents competitors Only at 2.45pm.

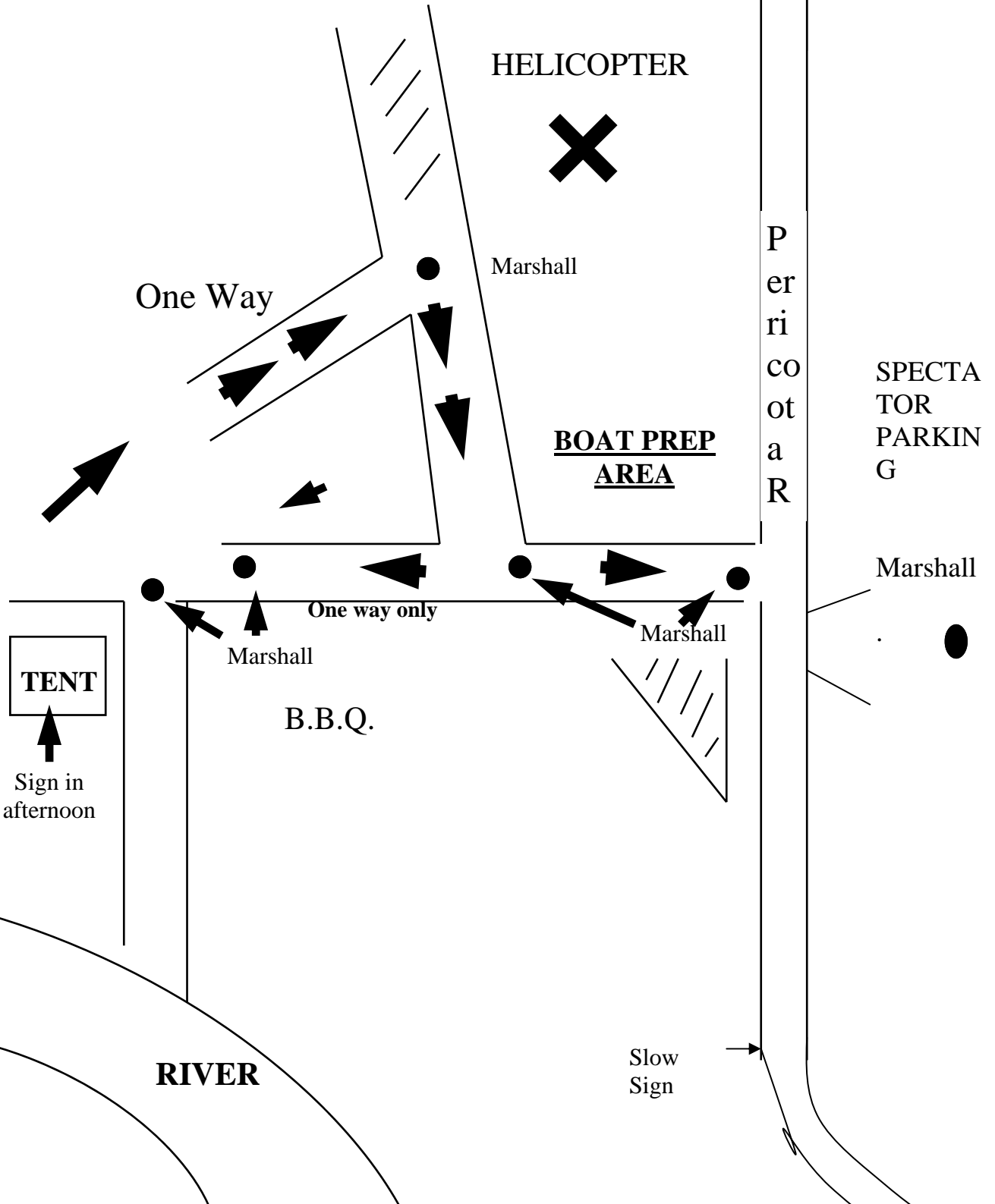
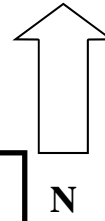
See map for directions on Launch Procedures.

All Crews are to Launch own Boats. As area is limited please prepare your boat on the High ground to the right of the road in map. Please park with consideration for others in this limited Parking area. Only Boat and Trailers in this area, rest of team to park across road in spectator parking area.

NO BOAT IS ALLOWED DOWN TO RAMP AREA TILL DIRECTED BY AN OFFICIAL.

5 mile map

Traffic Control Southern 80 5 Mile Ramp



➤**Please Note.**

Class 30-31a boats will not be allowed down to lower area or onto ramp till all of previous classes have left.

Class 32-35 boats will not be allowed down to lower area or onto ramp till all of previous classes have left.

Presidents Invitational Boats will not be allowed down on lower level or down the ramp till all Blitz Boats are in the water.

Warm up.

Boats may warm up on the downstream side of the 5 mile ramp as far as Goldsbrough road. You are not to proceed past the orange buoys.

You are required to warm up with extreme care.

NO ALCOHOL ALLOWED IN BOATS DURING COMPETITION. NO CONSUMPTION OF ALCOHOL IS ALLOWED UNTIL BOAT IS REMOVED FROM THE WATER..

RACE PROCEDURE [pre start]:

Race Start Times for whole weekend are printed in the Official Program.

Hooter will sound at 10 minutes to start.

FLAGS - GREEN & NATIONAL	- 5 MINUTES TO START
GREEN DOWN	- 30 SECONDS TO START Skiers in the water
NATIONAL (AUSTRALIAN)	- START

The first boat away in each session will get the National Flag. All others will get a green flag.

Start, Racing, Retirement procedures are as previously mentioned.

➔Remember report to Boat recovery On 5480 7266, if you break down or be Disqualified for the 2009 Southern 80 Ski race. Or TXT to 0429408693. Send Boat Name, Number and Class.

FINISH LINE. – Vic Park

➤ DROP EARLY AND TEAM WILL RECEIVE 1 MINUTE PENALTY

Please note. This map is a guide only, common sense is to prevail. If there are too many boats in the area of the Red Buoys and you may have to stop sooner, or proceed on past the Red Buoys. *This is a Safety precaution to ensure that those who have completed the Race are not in danger in the finish line area.* The Safety Officer will be observing the finish line procedure.

Finish Line.....Chequered Buoy.

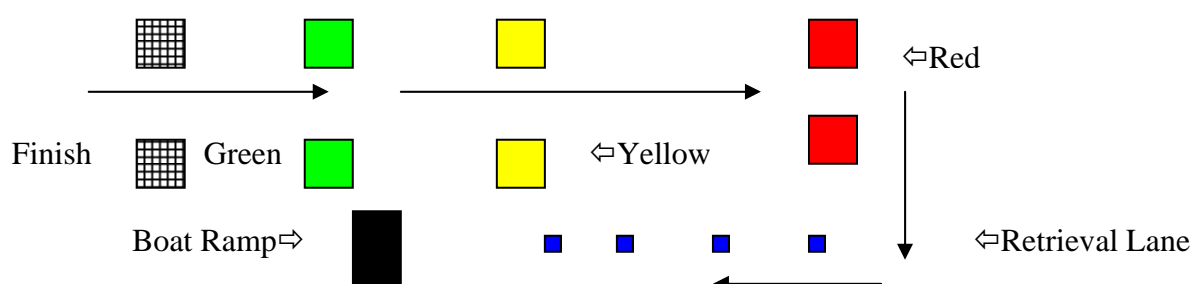
Slow Down.....Green Buoy.

Prepare to Stop.....Yellow Buoy.

Stop.....Red Buoy.

Lower your Skiers into the water on tight ropes. Then pull into boat. Do not go back. Skiers who fall after the line will be collected by a rescue boat. Boats are to idle in the retrieval lane.....Blue Buoy.

Skiers must not throw rope after crossing line.



FINISH LINE: Study the map above; and ask officials at start if you don't understand it.

Line boats up in retrieval lane. You will be removed from the water in order. Trailer Crew to line up at collection point, (top of Ramp fenced area). Tractors will collect your trailer, and your boat will be returned to the trailer park. Do not attempt to jump the queue, penalties will apply.

ALL CREWS ARE TO OBEY PARKING OFFICIALS.

REPORT FORMS

At the end of racing each day teams need to complete the Race day report forms and submit to Race Control by 6.00pm on the day of racing. If an incident occurs, an SRA INCIDENT form needs to be completed. Anyone requiring hospital treatment is also required to complete a NSW MARITIME report Form also. If forms are not handed in, race times will not be posted.

PROTESTS:

All protests must be in writing, on an Official Protest Form as per SRA Rules. Protests must be lodged within 30 minutes of posting of provisional results, as per SRA Rules. Protest Fee as per SRA Rule No 5.1. Maximum of two (2) team members to attend protest meeting.

⊗ Abuse of officials will mean instant disqualification.

❖ Decision of Chief Judge is final ❖.

POST RACE SCRUTINEERING

Engine Classes will be required for post race Scrutineering. These will be notified Via a call to Team Captain and they will be called to race control via announcement over loudspeaker.

PRESENTATION

Presentation for Saturday events will be held at end of days Racing in Vic Park Finish line compound.

Persons unsuitably dressed will not be allowed onto Presentation area i.e. shirts must be worn.

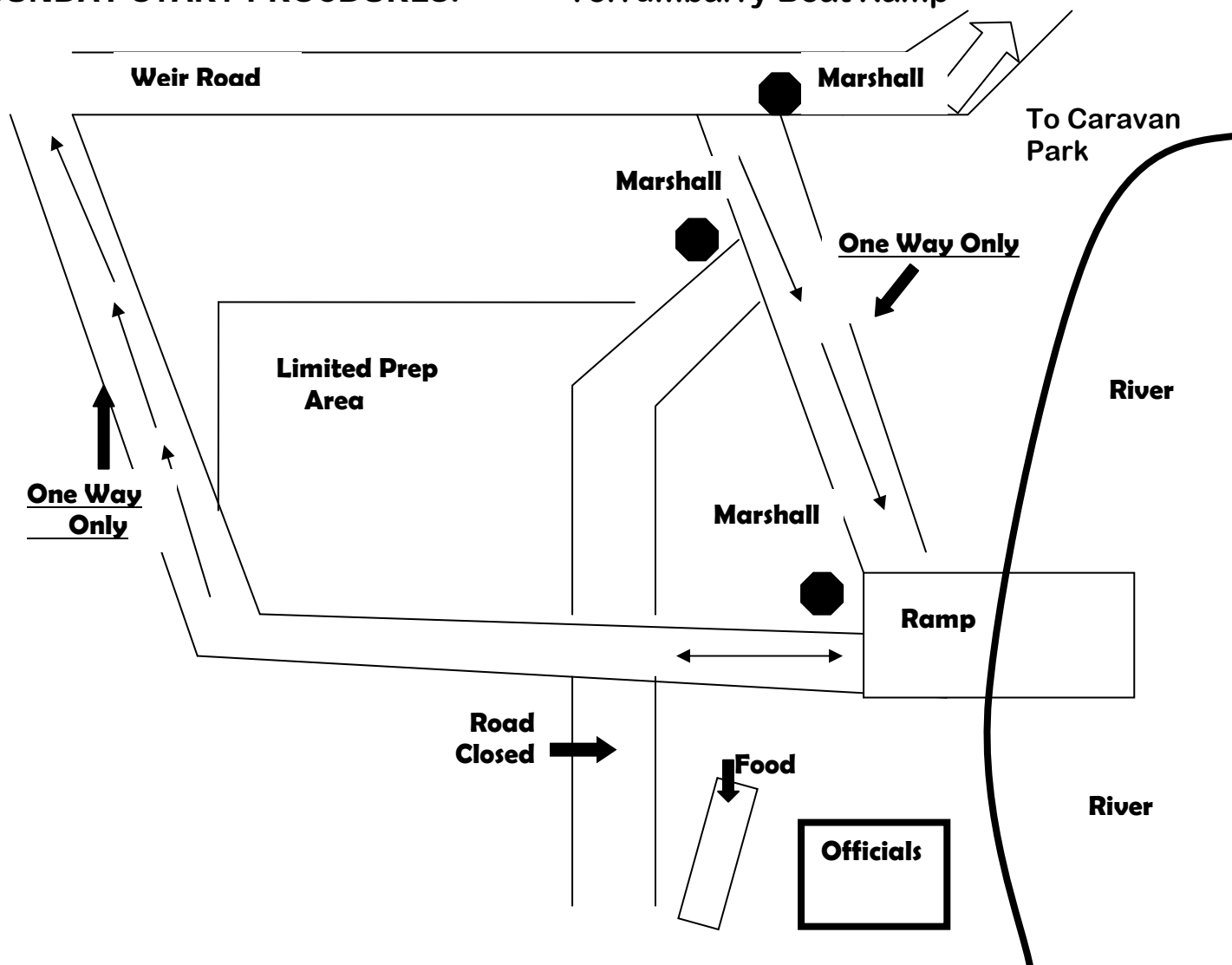
No Alcohol or drinks on Presentation Dias.

Team members must be in attendance at presentation, or prize money will be forfeited.

NO SPEECHES WILL BE ALLOWED EXCEPT FOR OUTRIGHT WINNERS AND MEMORIAL TROPHY WINNERS ONLY.

SUNDAY START PROCEDURE.

Torrumbarry Boat Ramp



LAUNCHING PROCEDURE .. TORRUMBARRY BOAT RAMP.

Drive Slowly. There will be Marshals and other Traffic on the road.

1. Co-Operate with Officials.
2. Give-way to boats called forward if requested to do so. Your turn will come.
3. Ropes to be set up in preparation area along the side of the road only.
4. Competitor Stickers must be displayed at all times.
5. Trailer to be moved out of the area immediately the boat is in the water. Have all your gear in the boat. ***Trailer Crews who do not obey directions from Marshals will be deemed as a crew member and that crew will be dealt with at the finish line by the Chief Judge.***
6. Be early. No preference will be given to teams that are late.
7. Competitors will be responsible for hitching and un-hitching trailers to their tow vehicle.
8. **ABUSE OF ANY OFFICIAL BY ANY CREW MEMBER WILL MEAN INSTANT DISQUALIFICATION.**
9. **ABUSE OF ANY OFFICIAL BY A PERSON WHO IS ASSOCIATED WITH ANY RACE TEAM WILL BE DEEMED PART OF THAT BOATS CREW AND SAME PENALTIES WILL APPLY.**
10. Crew members not with boat and in separate cars are not permitted in trailer line and must obey officials and go to general car park, then walk to boat ramp. So have your gear in the boat.
11. Crews can launch their own boats
12. Wrist Bands must be worn by all competitors. *** NO BAND NO ENTRY. NO EXCEPTIONS***

NO ALCOHOL ALLOWED IN BOATS DURING COMPETITION. NO CONSUMPTION OF ALCOHOL IS ALLOWED UNTIL BOAT IS REMOVED FROM THE WATER..

WARM UPS: No Competitor will be permitted to pass the Start Boat at Torrumbarry prior to the start of their race. (Only Exception to this is those boats in official warm up.)

Boats should be warmed up **SLOWLY and CAREFULLY** in the water before the Start Line.

⊗Competitors who cause problems in this area will be disqualified.

RACE PROCEDURE [pre start]:

Race Start Times for whole weekend are printed in the Official Program.

Hooter will sound at 10 minutes to start.

FLAGS - GREEN & NATIONAL	- 5 MINUTES TO START
GREEN DOWN	- 30 SECONDS TO START Skiers in the water
NATIONAL (AUSTRALIAN)	- START

The first boat away in each session will get the National Flag. All others will get a green flag.

Start, Racing, Injuries, Retirement, Finish line, Protest procedures are as previously mentioned.

Remember to report to Boat Recovery, Regardless of whether you Retrieve yourself or not.

Failure to do so will result in instant Disqualification for the 2009 Barrie Beehag Ski Race and 2010 Southern 80 Ski Race.

POST RACE SCRUTINEERING:

Engine Classes will be required for post race Scrutineering. You will be notified via a call to your Team Captain and Called up to Race Control via an announcement over the PA System.

PRESENTATION

Persons unsuitably dressed will not be allowed onto Presentation area i.e. shirts must be worn.

No Alcohol or drinks on Presentation Dias.

Team members must be in attendance at presentation, or prize money will be forfeited.

NO SPEECHES WILL BE ALLOWED EXCEPT FOR OUTRIGHT WINNERS AND MEMOMORAL TROPHY WINNERS.

If you have any questions, please don't hesitate to ask an official at start area.

The Moama Water Sports Club wish you all a safe and Successful 2009 Club Marine Southern 80 Ski Race.





**For Any Emergency Please ring
Emergency Number
54807266.**

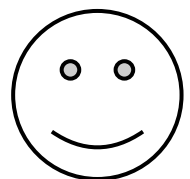
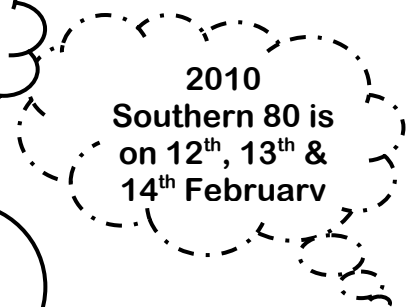
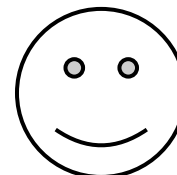


Important
All Crews must be
Breath Tested
Prior to each race.
You must be 00 To Race!!!
➔ All Drivers & Observers
MUST sign in at with Officials
at Start line.

**If you break down Notify,
Boat Recovery on 54807266 or
TXT to 0429408693 send-:**
(Boat Name, Class & Number)

✦ **If you Recover Yourself you must
still Notify Boat Recovery on
54807266.**

⊗ **If you don't you will be
instantly disqualified from
2009 Barrie Beehag Ski Race
& 2010 Southern 80 Ski Race.**



**All Competitors must wear their
wristbands to gain entry to Race
Compound.**

*** No Wrist Band - No Entry ***

⊗ No Exceptions ⊗