



2022  
Southern 80  
Water Ski



A.C.N. 002 570 738  
A.B.N. 11 002 570 738

# Official Competitor Briefing Sheet.

## Welcome to the 2022 Southern 80 Ski Race.

No person who has symptoms consistent with COVID-19 is NOT permitted to attend &/or compete in the Southern 80. (this includes any fever, respiratory symptoms, shortness of breath, sore throat, cough, lack of smell or fatigue)

Any person who starts to feel unwell or to exhibit symptoms of COVID-19 during the event MUST immediately avoid contact with all persons at the race and MUST IMMEDIATELY LEAVE the event area.

- It is the Responsibility of EACH Member of the team to be familiar with all sections of this briefing sheet.
- Penalties/Disqualifications will occur at the Discretion of the Chief Judge if these rules are not adhered to for the duration of the Southern 80 Ski Race.
- Failure to Obey Officials in any area will result in Penalties.
- Abuse of Officials will result in Disqualification. Per SRA Rule:7.1(vi)
- The Southern 80 is run under SRA Rules, S80 Aquatic licence and MWSC Conditions of Entry. Please refer to [www.southern80.com.au](http://www.southern80.com.au) for MWSC Conditions of Entry and Aquatic Licence conditions.

### **Briefings:**

#### **ALL COMPEITIORS (Over13 years old) ARE REQUIRED TO DO BRIEFING.**

All competitors **(Over 13 Years)** are required to do an online briefing which will be emailed to all CURRENT SRA members on Wednesday 4<sup>th</sup> May and must be completed by midnight Thursday 12<sup>th</sup> May 2022

#### **Breath Testing: You Must Bring your SRA Card to scan in for Breath Testing.**

Remember your whole team (*anyone over 16*) will be Breath Tested Prior to competing in **ANY** Race over the whole weekend. You will need to be tested **prior to Every Race.**

You must produce your SRA Membership card each time you are breath tested. Report to officials at start areas to be tested, prior to entering the water.

#### **All skiers are to produce their helmets at breath testing.**

\*Under 16's are still required to present helmet and SRA Membership Card.

### **Bakers Blitz, Presidents Dash, Expert Shootout:**

Results from Bakers Blitz, President's Dash and Expert Shoot out will be combined to create the Sunday afternoon starting order. Numbers will be provided by MWSC for Sunday and available at breath testing at the start line.

### **River Closures.**

Saturday 14th-: Goldsbrough Road 4 km downstream of 5 Mile Ramp to Vic Park Boat Ramp Time 6 am -7 pm.

Sunday 15th-: From Torrumbarry Weir to Vic Park Boat Ramp Time 6am-7 pm

## 5 Mile Boat Ramp Launching Procedure:

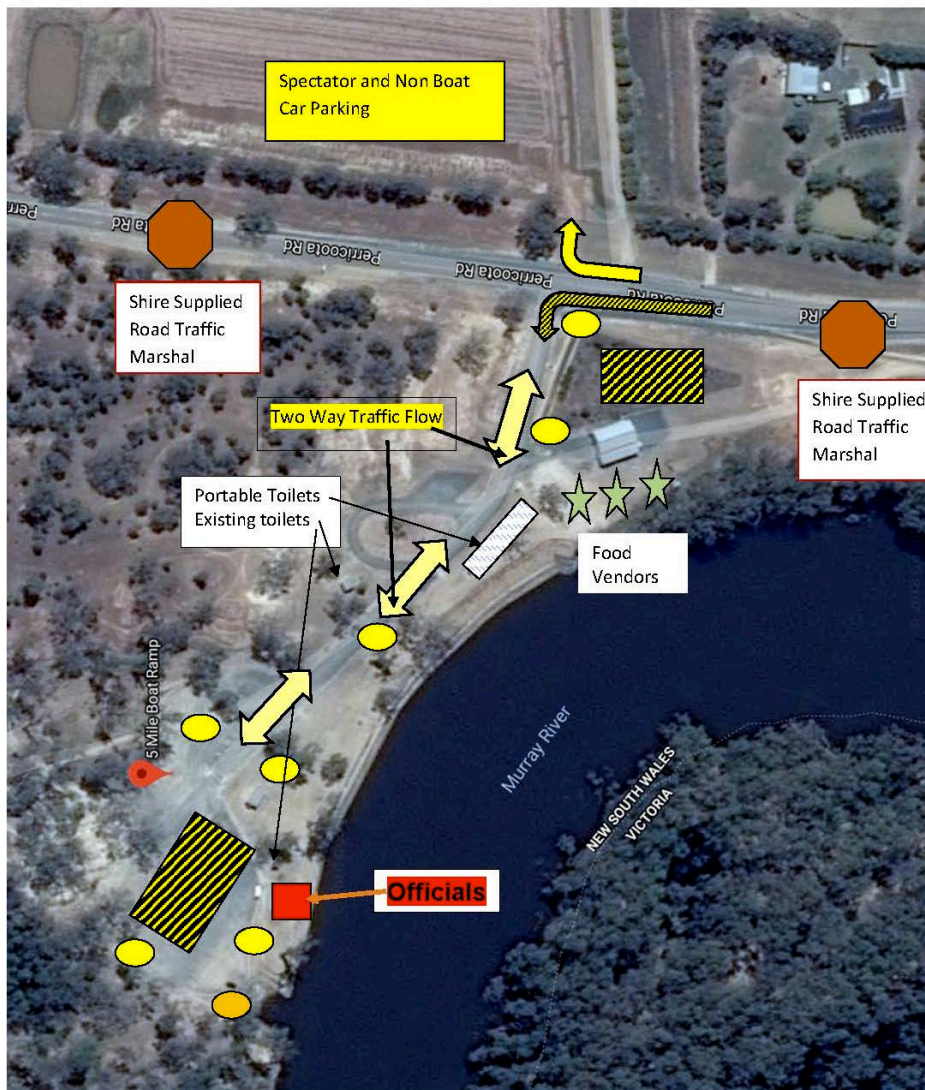
See map for directions on Launch Procedures. (Below)

- All Crews are to Launch their own Boats only at 5 mile reserve, you cannot launch at any other ramp.
- As area is limited, please prepare your boat in the car park, please ensure that you are prepared, all equipment in the boat, all tie downs etc removed before you arrive at boat ramp.
- Please park with consideration for others in this limited Parking area.
- **Only Boat and Trailers in this area, rest of team to park across road in spectator parking area.**

**Until you are on the ramp, no persons allowed to ride on trailer.**

**No boat is allowed down ramp area till directed by an Official.**

**PLEASE obey all officials' directions.**



## Warm up:

Boats May warm up on the downstream side of the 5 mile ramp as far as the River Closed Buoys. If you leave or enter the course at River Closed buoys you will be immediately disqualified from all events over the total weekend.

**DO NOT** proceed past the Orange RIVER CLOSED buoys.

**\*You must warm up with extreme care - the river in this area MUST be treated as Two way normal navigation rules apply.**

## **RACE PROCEDURE [pre start]:**

Up to date start lists can be viewed at each start line prior to racing.

**Hooter will sound at 10 minutes to start.**

**FLAGS - GREEN & NATIONAL 5 MINUTES TO START  
GREEN DOWN 30 SECONDS TO START Skiers in the water  
NATIONAL (AUSTRALIAN) START**

**The first boat away in each session will get the National Flag -all others will get a green flag.**

### **Start:**

Odd Numbers start on Left side of River. Even numbers start on Right side of River.

The drop of the green flag for the boat prior to you is your ONE MINUTE call. The Green flag will then go up at 30 Seconds, This is your signal to drop your skiers into the water and run out your ropes.

The observer is to ensure the skiers have safely entered the water and not in any danger of being hit by boat or propeller, Driver can only start engine, or put in gear once observer has given the all clear that skiers are safe.

Wait for countdown.

**DO NOT DROP SKIERS IN UNTIL 30 SEC FLAG. (under 10's and disabled can go in early) DO NOT CROSS THE START LINE. No bow lifting prior to start, PENALTIES WILL APPLY FOR BREACH OF THIS.**

Call will be 15 sec, 10 sec call 5..4..3..2..1..GO !!! If you drop a skier, turn towards the nearest bank slowly and idle back up your ropes.

If a successful start is not made following 2 attempts, the competitor must either withdraw or move well away from start area.

### **Racing:**

Throughout the race, skiers are to Ski in the wash of the boat. If a skier goes outside the wash slow down and allow them to safely re-enter the wash. Do not proceed along the course unless you have (2) skiers in full race trim. Please ensure when towing junior skiers under 18 that careful attention is made to their safety and wellbeing. ***If you are caught by another boat, move to the right hand side, it's the observer's responsibility to let your driver know that you are being overtaken! NO Cutting of corners.***

### **Red Flag**

*If the race is stopped at any time a red flag will be displayed on course boats, followed by a stop message on Racesafe, you are to stop immediately where you are or be disqualified. This can be for the event or next year's Southern 80*

If you stop for any reason, you must display your orange flag. Breach of the above rules will incur penalties or disqualification; there are marshal boats along the course watching for infringements.

Please be aware of SRA rule 18.14(a). if you spin out, your race is done and you cannot continue. You **must** retire from race, place orange flag in holder and await instructions from sweep boat.

**Remember: Drive in the middle of the river and to the conditions of the day to ensure safe racing. Be very mindful that wind directions and strength may alter as you proceed along the course**

There are **Three** very tight bends on the course; all three are on the Sunday full Course and one on the Saturday short course. They all are at least 90°.

1. The first one for the full course is just after Perricoota Homestead, which is approx. 4 km upstream of Headworks Boat ramp (ramp No 3).
2. The second one is 2½ to 3km upstream of Thunderbird Boat ramp. (No 8)
3. The third one is just before Merool Sandbar.

We have placed in your eye line prior to these corners have a large orange marker in a tree approx. 200 metres before corner, to assist with reminder.

They all have a safety boat just before them. These boats will wave yellow flags if necessary as well as have amber flashing light going if necessary to warn of fallen skiers and stopped boats.

**Always race to the conditions of the day.**

## Injuries:

If you have an injured crew member-FOLLOW the prompts on Racesafe H2O first, call the emergency number. 1800 722 372

Wave your Medical Flag to the next boat. If you see a waving Medical Flag, signal to the next Marshal boat and report to Race Control at the Finish Line as soon as you finish.

PLEASE NOTE: Safety boats are instructed to report incidents, but are to remain on station unless ordered to attend by Race Control.

**MWSC recommends that all teams use a Telstra Phone as this is the only provider that works the entire race course.**

## Racesafe:

If you stop at any time, please immediately follow prompts on Racesafe as Race Control need to know you are okay!

## Retirement:

You must move to the nearest bank and Stay there.

You must **Immediately call boat recovery / emergency number.**

**THIS MUST BE YOUR FIRST CALL, (1800 RACE SAFE -1800 722 372) AND THEN CALL YOUR LAND CREW** or we can contact them for you and direct them to you.

You or your crew cannot consume any alcohol until the boat is removed from the water.

You will be instructed by the sweep boat crew, as to which ramp your boat is to be recovered from at either the end of that part of the racing or the next racing break.

**Ensure there is one crew member with your boat and that your Orange flag is displayed as required.** Your Crew will be called over the P.A at the finish line and *one member only* must report to the Information Centre at the Race Control Office where they will be given directions on where to find you by the Boat Recovery official.

**DO NOT MOVE ON THE COURSE STAY PUT AND WAIT FOR SWEEP BOAT.**

## **Always race to the conditions of the day**

Remember-: If you have an Injury Follow the Race Safe H2O Prompts then Call Boat Recovery for assistance. 1800 RACESAFE (1800 722 372)

If you break down you also must call this number Immediately. 1800 722 372

**MWSC recommends that all teams use a Telstra Phone as this is the only provider that works the entire race course.**

## Finish Line: Victoria Park

Proceed past the finish buoys, slow down and keep going to the area with red buoys.

**DO NOT DROP SKIERS** Until past last retrieval lane buoy.

**Drop skiers in early and team will receive 1 minute penalty**

*This is a Safety precaution to ensure that those who have completed the Race are not in danger in the finish line area. The Safety Officer will be observing the finish line procedure.*

Finish Line.....Chequered Buoys.

Stop.....Red Buoys.

Lower your skiers into the water on tight ropes. Then pull into the boat. Do not go back. Skiers who fall just after the line will be collected by a MWSC rescue boat. Boats are to idle in the retrieval lane.

**Skiers must not throw the rope after crossing the line!**

Once skiers in your boat idle to retrieval lane

Line boats up in retrieval lane. You will be removed from the water in order.

Trailer Crew to line up at collection point, (top of Ramp fenced area).

Tractors will collect your trailer, and your boat will be returned to the trailer park.

Your Trailer driver must be with trailer to hook and unhook from tractor's-**THIS IS NOT** the job of the tractor drivers or traffic marshals.

Do not attempt to jump the queue, penalties will apply.

**All crews are to obey parking officials**

Everyone within race compound (Finish Line area) needs a wrist band!

**No wristband- No Stay – No Exceptions.**

### **Race Day Reports:**

At the end of Racing EACH day teams need to complete their Race Day Report form and submit to Race Control By 6.00pm. No Race Day Report, NO times Posted!

If an incident has occurred an SRA Incident form will need to be completed. If anyone in a team required hospital treatment then a NSW Maritime report form MUST also be completed.

Please Note: Team Captains will receive a SMS message when class results are posted. Please ensure correct phone number is listed for team captains when you complete your paperwork collection on the Friday. It is the duty of the team to ensure results are checked with the required timeframe.

All protests must be in writing, on an Official Protest Form as per SRA Rules. Protests must be lodged within 30 minutes of posting of provisional results, as per SRA Rules. Protest Fee applies. Maximum of two (2) sober team members to attend protest meeting.

Abuse of officials will mean instant disqualification. Decision of Chief Judge is final.

### **Presentation:**

Finish Line Compound is a **GLASS FREE ZONE & NO OUTSIDE ALCHOL WILL BE ALLOWED THROUGH THE GATE!**

Presentation for Saturday events will be held at the end of racing in Vic Park Finish line compound.

Persons unsuitably dressed (i.e.; No Shirt) will not be allowed onto presentation stage.

**No Alcohol or drinks on presentation stage.**

No Speeches will be allowed except for Blitz, Outright & Memorial trophy winners.

### **Sunday Start Procedures:**

#### **Launching Procedure – Torrumbarry Boat Ramp See Map following**

Drive Slowly. There will be Marshals and other Traffic on the road.

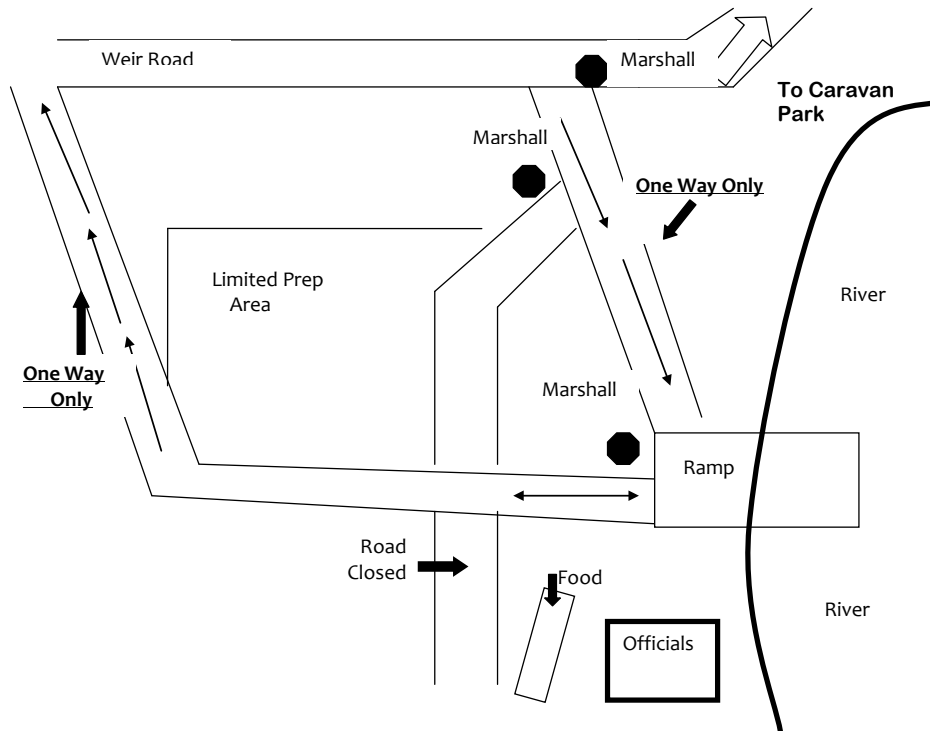
- Co-operate with officials
- Give-way to boats called forward if requested to do so.
- Ropes to be set up in prep area along the side of the road.
- Competitors are responsible for launching their own boat.
- Be early. No preference will be given to teams that are late!
- Spectators & crew vehicles are not to be in trailer launching line-Park in Spectator carpark.
- Trailer to be moved out of the area as soon as the boat is in the water. Have all of your gear already in the boat.
- Trailer crews are deemed to be a part of your crew and must follow directions from officials.
- Crew members in separate cars are NOT permitted in Trailer queue and must park in general car park. Ensure you have all your gear in your boat!
- **Abuse of any Official by any crew member or any person associated with a team will result in instant disqualification.**

### **Warm up:**

You may warm up slowly and carefully away from the start area. Competitors who cause problems in this area will be disqualified.

- **Procedures for Start, Racing, Retirement are as previously mentioned.**

## Map of Launching procedure at Torrumbarry



## Injuries:

If you have an injured crew member-FOLLOW the prompts on Racesafe H2O first, call the emergency number. 1800 722 372

Wave your Medical Flag to the next boat. If you see a waving Medical Flag, signal to the next Marshal boat and report to Race Control at the Finish Line as soon as you finish.

***PLEASE NOTE:*** Safety boats are instructed to report incidents, but are to remain on station unless ordered to attend by Race Control.

***MWSC recommends that all teams use a Telstra Phone as this is the only provider that works the entire race course.***

**Racesafe: if you stop at any time, please immediately follow prompts on Racesafe as Race Control need to know you are okay!**

- **Procedures for Finish line, Post Race Scrutineering, Race Day reports & Protest are as previously mentioned.**

Please Note: Team Captains will receive a SMS message when class results are posted. Please ensure correct phone number is listed for team captains at Friday paperwork collection. It's the duty of the team to ensure results are checked within the required timeframe.

## Post Race Scrutineering:

Engine Seals will be checked for engine classes for first 4 placegetters team will be advised.

## Presentation:

Finish Line Compound is a **GLASS FREE ZONE & NO OUTSIDE ALCHOL WILL BE ALLOWED THROUGH THE GATE!**

Persons unsuitably dressed (i.e.; No Shirt) will not be allowed onto presentation stage.

**No Alcohol or drinks on presentation stage.**

No Speeches will be allowed except for Outright & Memorial trophy winners.



## **Reminders.**

✿ You must complete online briefing before midnight **Thursday 12<sup>th</sup> May 2022.**

✿ Team Members Must obey Officials at all times.

✿ Team Members **Must** be breath tested prior to each event they are competing in.

✿ Absolutely no alcohol can be consumed until your boat is out of the water this applies to any boat stopped on the bank.

✿ SRA membership card is required to be presented for breath testing & helmet checks.

✿ All Skiers are to present their Helmets at breath testing

✿ MWSC suggests that teams carry a Telstra phone in their boat as this is the only phone that works along the entire course.

✿ If you break down, you must call Boat Recovery on 1800 RACE SAFE (1800 722 372). This **MUST** be your first call.

A team member must stay with the boat and make sure you have your Orange Flag displayed.

If you have any questions, please don't hesitate to ask an official at Start or Race Control area.

***The Committee of the Moama Water Sports Club wishes everyone a safe and successful 2022 Southern 80.***



A.C.N. 002 570 738  
A.B.N. 11 002 570 738



**Dates for the 2023 Southern 80 are: 10<sup>th</sup> to 13<sup>th</sup> February**